



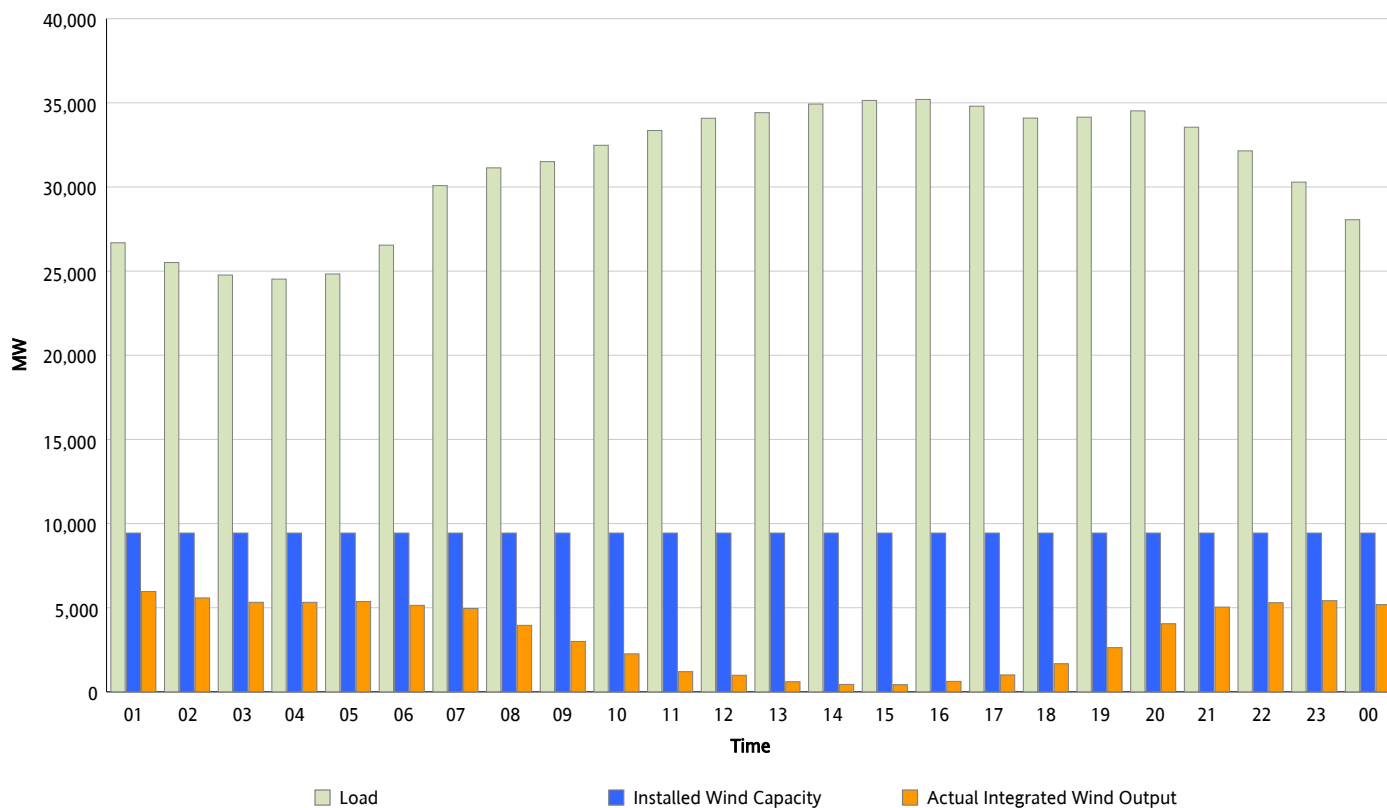
ERCOT Grid Operations

Wind Integration Report : 03/02/2012

Peak Load	35,201 MW
Load Peak Hour (HE)	16
Wind Over Peak	625 MW
Wind Record 10/07/11	7,400 MW
Max Wind Value*	6,264 MW
Wind Peak Time	00:00
Wind Integration %	22.8 %

Hourly Average Actual Load vs. Actual Wind Output

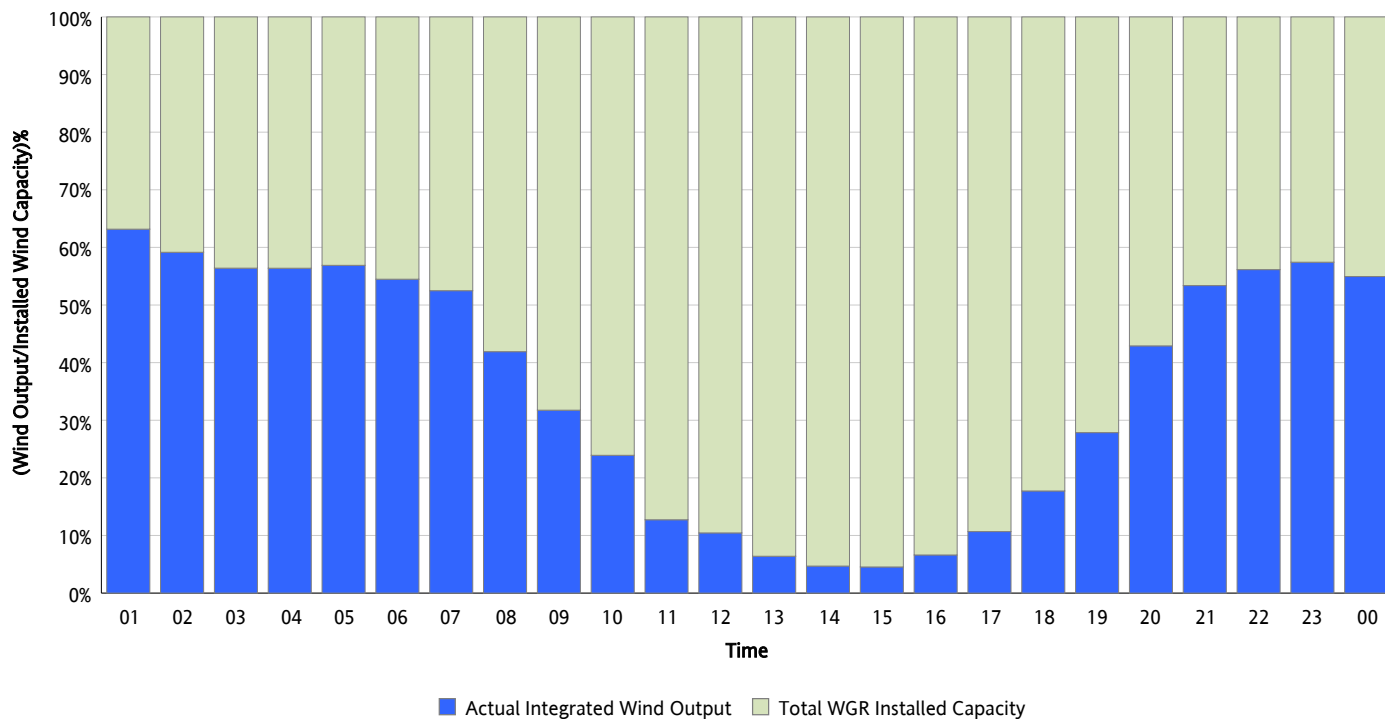
03/02/2012



* Wind Max represents the instantaneous value and the rest of the values are integrated over the hour

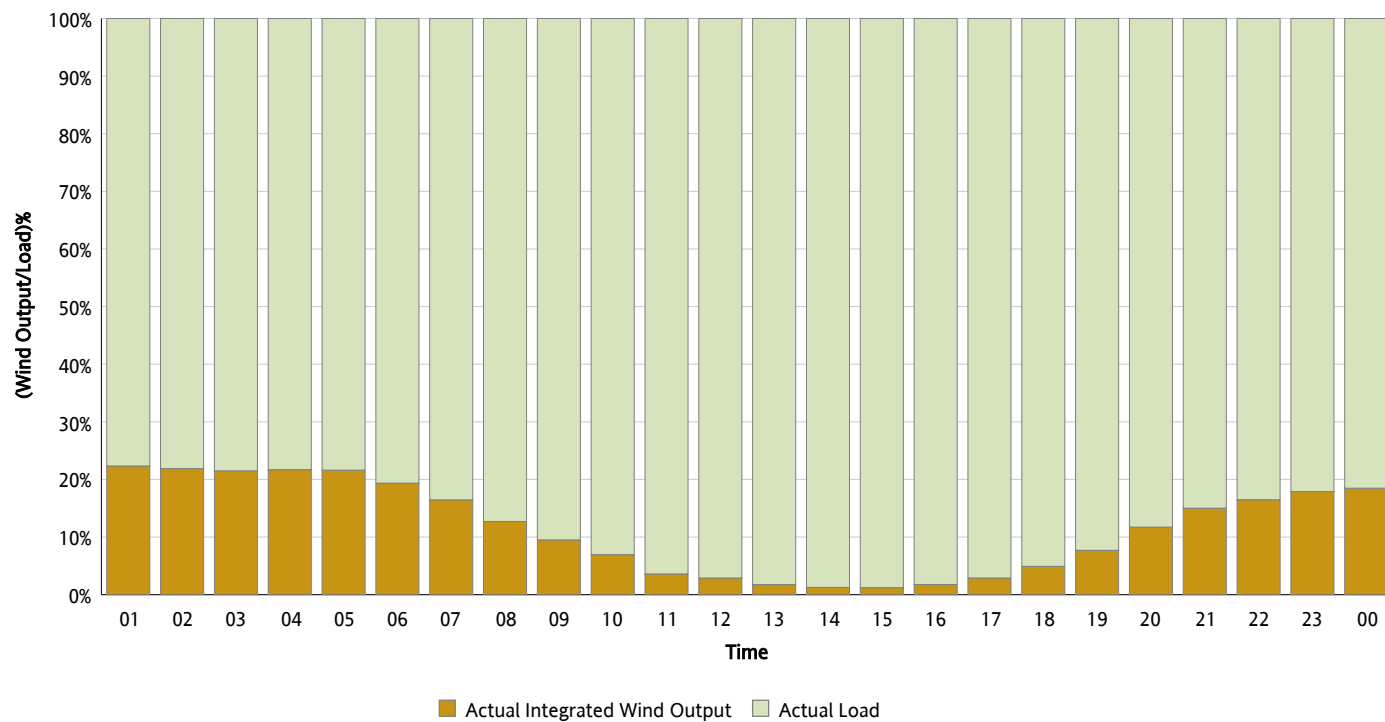
Actual Wind Output as a Percentage of the Total Installed Wind Capacity

03/02/2012



Actual Wind Output as a Percentage of the ERCOT Load

03/02/2012



ERCOT Load vs. Actual Wind Output

02/24/2012 - 03/02/2012

